

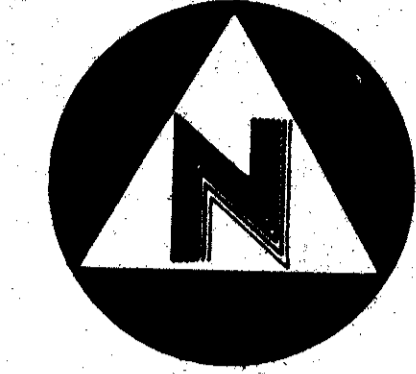
43/98

# PIPERS GLEN PLAT NO. 1 (P.U.D.)

98

STATE OF FLORIDA  
 COUNTY OF PALM BEACH  
 THIS PLAT WAS FILED FOR  
 RECORD AT \_\_\_\_\_ M.  
 THIS DAY OF \_\_\_\_\_ A.D. 1981  
 AND DULY RECORDED IN PLAT BOOK  
 ON PAGES \_\_\_\_\_ AND \_\_\_\_\_

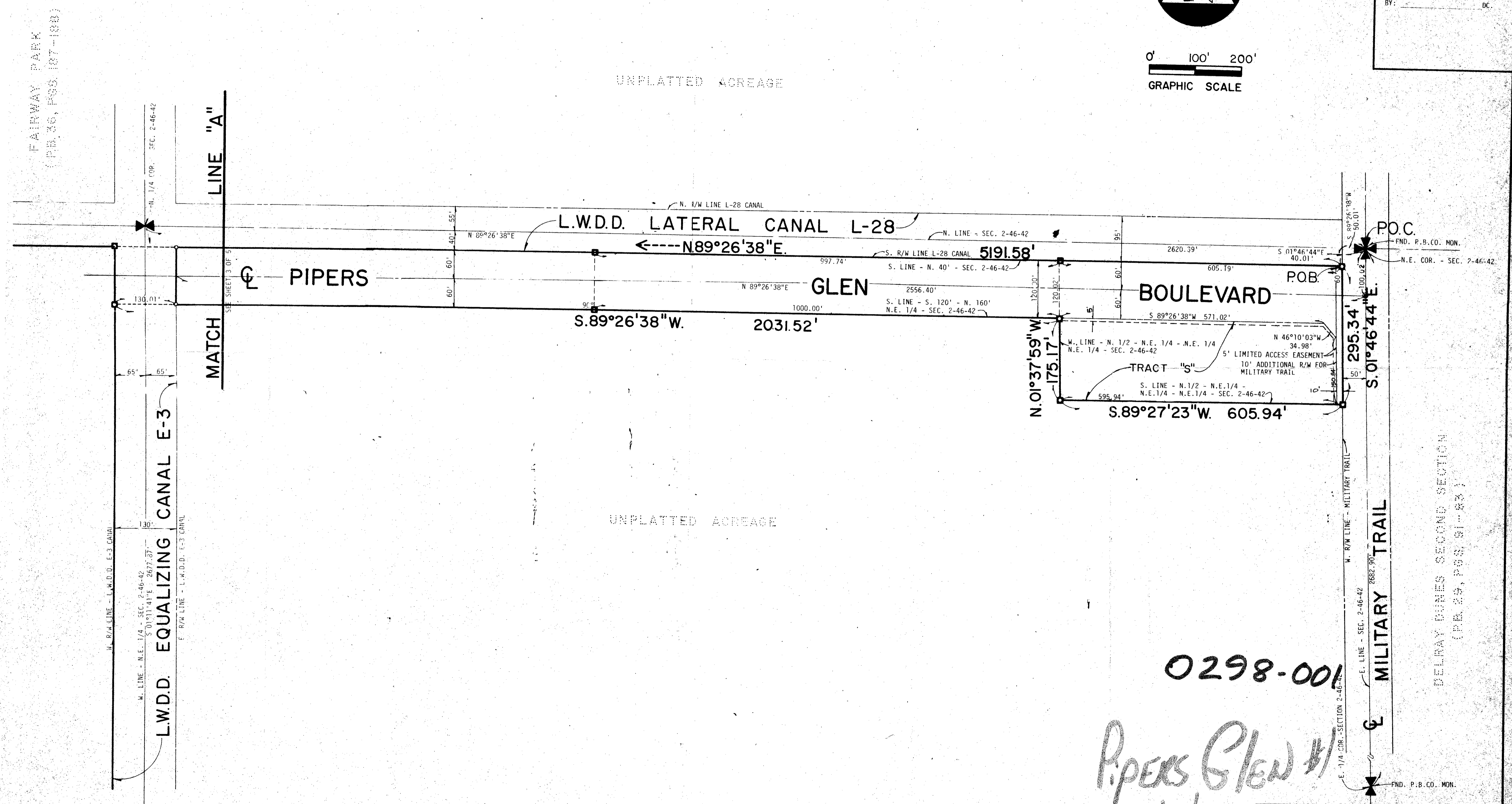
JOHN B. DUNKLE, CLERK  
 CIRCUIT COURT  
 BY: \_\_\_\_\_ DC.



0' 100' 200'  
 GRAPHIC SCALE

UNPLATTED ACREAGE

UNPLATTED ACREAGE



0298-001

*Pipers Glen #1*  
*43/98*

CENTER OF SECTION 2-46-42

THIS INSTRUMENT WAS PREPARED BY ROBERT J. WHIDDEN IN THE OFFICES OF BENCH MARK  
 LAND SURVEYING AND MAPPING, INC., 2833 EXCHANGE COURT, WEST PALM BEACH, FL 33409.

DATE	REVISIONS	BY

**BENCH MARK**  
*land surveying and mapping, inc.*  
 2300 PALM BEACH LAKES BLVD. SUITE #200 WEST PALM BEACH, FLORIDA 33409 DP CODE 3309

CONRAD W. SCHAEFER CONSULTING ENGINEERS, INC.  
 PALM BEACH COUNTY, FLORIDA

OWN	TAL	PKD	DATE	12-16-80	WD. NO.	P1
SCALE	1"=10'	SIZE	FB P	SHEET	2	OF 5

DELRAY DUNES SECOND SECTION  
 (P.B. 29, PAGES 91-93)